



THE YALE CLUB  
OF NEW HAVEN

2006  
SCHOLARSHIP  
AWARDS



*“With ample generosity and support, the Yale Club of New Haven augments the Yale experience in significant and enduring ways, and it is to its benefaction that I remain indebted. Beyond the groups that furthered the excellence of my undergraduate days, the Yale Club, in great measure, remains unsurpassed amongst my fondest reflections, for it constituted the interchange between financing my undergraduate education and the committed intention I hold of sustaining my relationship with Yale long after graduation.”*

— Tahia Thaddeus Reynaga, Ph.D.  
Professor of English and Humanities  
Yale College Class of 1998



## NAMED SCHOLARSHIPS

**HENRY P. & JANICE BRIGHTWELL SCHOLARSHIP:** Established in 1992 by Mr. Brightwell '35, a long-standing member of the Yale Club Board of Directors, and his wife.

**CARMEN L. COZZA SCHOLARSHIP:** Established in 1989 in celebration of Mr. Cozza's twenty-five years of coaching football at Yale.

**JAMES S. DAVIE SCHOLARSHIP:** Established in 1985 in memory of Professor Davie '45W, '51P.H.D, a long-time Dean of Timothy Dwight College and former President of the Yale Club.

**FLORENCE & SHERWOOD EBERTH SCHOLARSHIP:** Established in 1991 by Mr. Eberth '20S, a former President of the Yale Club, and his wife.

**M. ALBERT GEIB SCHOLARSHIP:** Established in 1989 in memory of the Professor of Engineering, to assist students entering the sciences.

**A. BARTLETT GIAMATTI SCHOLARSHIP:** Established in 1979 in his honor when Professor Giamatti '60, '64 P.H.D became President of Yale, and greatly enhanced by contributions since his death.

**WILLIS HUNT SCHOLARSHIP:** The first Yale Club Named Scholarship, established in 1976 by a bequest of Dr. Hunt, a long-time supporter of the Club.

**ROBERT E. & RUTH R. LAPIDES SCHOLARSHIP:** Established in 1994 by Mr. Lapides '39 and his wife, on the occasion of his 55th Yale reunion.

**SIDNEY LOVETT SCHOLARSHIP:** Established in 1979 in memory of the Rev. Lovett '13, much-loved chaplain of the University.

**ROBERT & JOYCE MAILHOUSE SCHOLARSHIP:** Established in 1999 to assist local students, particularly those from Branford, entering Yale.

**EDWARD M. NOYES II SCHOLARSHIP:** Established in 1999 in memory of Mr. Noyes '40, a former Yale Club President and long-time head of Career Services at Yale.

**PHILIP M. & MATTHEW A. ORAVETZ SCHOLARSHIP:** Established in 2003 to assist local students, particularly those who have the attributes of a scholar-athlete.

**WINTHROP A. SMITH SCHOLARSHIP:** Established in 2001 by the Smith family in memory of their father Winthrop A. Smith '31, a long-time supporter of the Club.

**WHITE BROTHERS SCHOLARSHIP:** Established in 1993 by Mr. White '42S in memory of his brother James '40. Both men were Yale Club of New Haven Scholars.

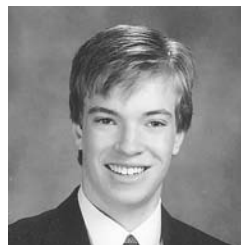
*The Yale Club of New Haven will contribute  
over \$198,000 to 71 exceptional undergraduate  
and graduate students from the greater New Haven area  
during the coming academic year.*



## 2010



**MARK ROBERT ARCOBELLO**  
Salisbury School and Milford, CT  
Winthrop A. Smith Scholar  
Hockey, CT All State and State MVP  
Soccer  
Crew  
Community Service



**WILLIAM ROBERT BRADLEY**  
Notre Dame High School  
Philip M. & Matthew A. Oravetz Scholar  
Yale Book Award  
Bausch & Lomb Science Award  
Tennis Team, Co-Captain  
NH Register Youth of the Year  
Cancer Survivor; Hospital Volunteer  
Career Goal: Pediatric Oncologist



**MARIA A. BLACKWOOD**  
Philips Academy Andover and New Haven  
Florence & Sherwood Eberth Scholar  
Literary Magazine, Editor  
General Interest Magazine, Editor  
International Club, Vice President



**JENNIFER LINH BUI**  
Academy of Our Lady of Mercy  
Sidney Lovett Scholar  
Fairfield University Book Award  
Volunteer at Bridgeport Hospital  
Cardinal Sheehan Center, Volunteer Tutor  
Peer Counselor; Spanish Club  
Dance; Musicals  
Vietnamese Catholic Youth Group



**LEANG CHAING**  
Central High School, Bridgeport  
Harvard Book Award  
Captain, National Engineering Design  
Challenge Team and JETS  
US Academic Decathlon  
Volunteer Big Brother; Fencing  
Potential Major: Psychology



**CARA ALICE MORAN**  
West Haven High School  
James Davie Scholar  
Yale Book Award; Harvard Book Award  
Bausch & Lomb Science Award  
Mock Trial Team, Co-Captain  
Irish Step Dancing  
Community Service  
Potential Major: Political Science



**BASIE BALES GITLIN**  
Choate and North Branford  
Henry & Janice Brightwell Scholar  
Published Expert on Rare Books  
TV Appearances on Book Collecting  
Drummer in the Choate Band  
Tutor in French and Phonics  
Potential Major: History



**VIVIANA SUZETTE PUCHI**  
Hamden High School  
Edward M. Noyes II Scholar  
Kodak Young Leaders Award  
National Hispanic Recognition Program Scholar  
Student of Italian and Arabic in Yale Language  
and Culture Exposure Program  
Volunteer at La Casa Community Center  
Travel to Spain and Morocco



**JAKE RIDLEY KEYES**  
Wilbur Cross High School  
A. Bartlett Giamatti Scholar  
Varsity Track and Soccer  
Lacrosse Team, Captain and MVP  
New Haven Reads, Reading and Math Tutor  
New Haven Bookbank, Volunteer  
*New Haven Advocate*, Intern  
Forum Youth Group; Yale Model UN



**ALYSSA LYNNE REYES**  
Academy of Our Lady of Mercy  
M. Albert Geib Scholar  
Harvard Book Award; Xerox Corp. Award  
Bausch & Lomb Science Award  
Indoor and Outdoor Track  
Varsity Math Team; Mock Trial Team  
Concert Choir; Advanced Vocal Ensemble  
Day Camp and Hospital Volunteer



**JONATHAN MERTON LASSONDE**  
Hamden Hall Country Day School  
Robert & Joyce Mailhouse Scholar  
Varsity Soccer, Captain  
Squash  
Newspaper, Co-Editor  
Literary Magazine, Editorial Staff  
French-American Exchange Program  
Environthon and Debate Club



**BRADLEY MORVEN WILLOCKS**  
O. H. Platt High School  
White Brothers Scholar  
Varsity Swimming and Tennis  
Chess Club, President  
Latin Club, Senior Consul and Dictator  
Yale University Summer Program  
Cambridge College Summer Programs  
Intended Major: Physics

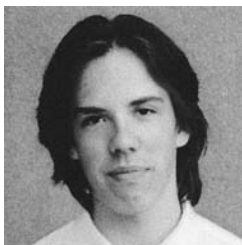


**ADRIAN LATORTUE**  
Central High School, Bridgeport  
Cornell Book Award  
Fencing; JETS  
Director and Editor of *The Bag*,  
a Film Aired on PBS  
Elements Hip Hop Club, Founder  
Interact Club; Community Service



**EVA SIMONE WILSON**  
Hopkins School  
Robert & Ruth Lapidés Scholar  
New Haven Ballet  
National French Contest, Placement In Top 10  
Maroon Key; Hopkins Drama Association  
Students United for Racial Unity  
Vincent Mauro Elementary School Tutor  
Hopkins Summer School Teaching Assistant

## 2009



**JULES ELLIOTT BOLTON**  
Wilbur Cross High School  
A. Bartlett Giamatti Scholar  
Ezra Stiles College  
Yale Men's Ultimate Superfly  
Intended Major: Applied Mathematics



**JOANNE M. CYGANOWSKI**  
St. Joseph High School  
White Brothers Scholar  
Ezra Stiles College  
Yale Women's Club Volleyball  
Yale Medical Professions Outreach  
Yale Reach-Out Poland  
Major: MCDB (pre-med)



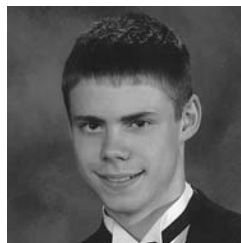
**ALISHA NICOLE BUTLER**  
Hillhouse High School  
Henry & Janice Brightwell Scholar  
Calhoun College  
Yale Political Union, Progressive Party  
Women and Youth in Support of Each Other  
Public School Intern  
Current Majors: History, Political Science



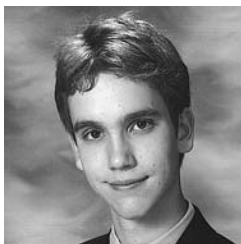
**MICAELA GRAMELIS**  
West Haven High School  
Carmen L. Cozza Scholar  
Berkeley College  
IM Secretary  
Club Lacrosse  
Best Buddies  
BK Housing Committee  
BK Master's Aide



STEVEN LAO  
Fairfield College Preparatory School  
James S. Davie Scholar  
Jonathan Edwards College  
Yale Precision Marching Band (Trumpet  
Section Leader)  
Tentative Major: Psychology



NICHOLAS R. OLSEN  
Career High School  
Robert & Joyce Mailhouse Scholar  
Berkeley College  
Intended Major: E and EB



MICHAEL RÉAL LAVIGNE  
Shelton High School  
Winthrop A. Smith Scholar  
Davenport College  
The Yale Spizzwinks(?) A Capella



JAMILAH S. PRINCE-STEWART  
Hopkins School  
Robert E. & Ruth R. Lapidès Scholar  
Ezra Stiles College  
Black Student Alliance at Yale  
Rhythmic Blue, Hip Hop Dance Troup  
Ethnic Performance Guild  
Yale West Indian Student Organization  
Intended Major: Ethics, Politics & Economics



REGINA MARIE MELENDEZ  
Sacred Heart Academy  
M. Albert Geib Scholar  
Silliman College  
Intended Major: Biomedical Engineering



LEAH ANN QUINTILIANO  
Bunnell High School  
Florence & Sherwood Eberth Scholar  
Silliman College  
Yale Symphony Orchestra, Flute  
Saybrook College Orchestra  
Berkeley College Orchestra  
Major: Psychology



VANESSA MENDOZA  
Hopkins School  
Sidney Lovett Scholar  
Jonathan Edwards College  
Yale Engineering Design Solar Boat Team  
Yale Gospel Choir, Tour to South Africa  
Intended Major: Architecture



XINYUAN WU  
Amity High School  
Philip M. & Matthew A. Oravetz Scholar  
Jonathan Edwards College  
Colleges Against Cancer; Relay for Life  
Chinese American Student Assoc.; Red Cross  
Student worker at Yale Development Office  
and Sterling Memorial Library  
Intended Major: Biomedical Engineering



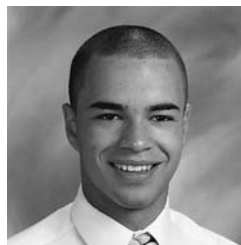
MATTHEW A. MOURADIAN  
Daniel Hand High School  
Edward M. Noyes II Scholar  
Morse College  
Yale Symphony Orchestra, Violinist  
Chamber Music Society of Yale  
Malibu 5 Piano Quintet  
Berkeley College Orchestra



## 2008



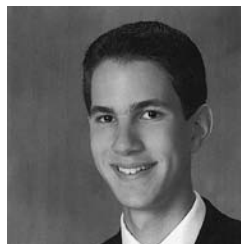
MARK J. ALBIS  
East Haven High School  
M. Albert Geib Scholar  
Pierson College  
Majors: East Asian Studies and  
International Studies



PHILIP J. BURKHARD  
Notre Dame High School  
James. S. Davie Scholar  
Calhoun College  
Yale Entrepreneurial Society, Co-Vice President  
Vietnamese Students Association  
*Yale Globalist*, Publisher  
Major: History



JESSICA M. BIALECKI  
Wilbur Cross High School  
A. Bartlett Giamatti Scholar  
Silliman College  
Dwight Hall at Yale; Best Buddies  
*Yale Herald*, Columnist; FOCUS leader  
Tutoring in Elementary Schools  
New-Haven-Léon Sister Cities Project, Delegate  
Major: Political Science/Urban Studies



DAVID R. DEANGELIS  
North Haven High School  
Willis Hunt Scholar  
Timothy Dwight College  
Yale Symphony Orchestra, Vice-Pres.  
Yale Precision Marching Band  
Yale University Guild of Carillonners  
Saybrook College Orchestra  
Intended Major: Music





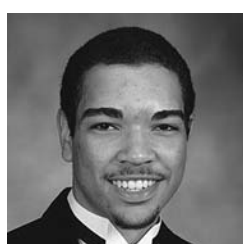
SIMONE C. ELLIS  
Warren Harding High School  
Winthrop A. Smith Scholar  
Morse College  
Urban Improvement Corps  
Reach Out Jamaica  
Dixwell Yale Community Learning  
Center Intern  
Major: Biology



RENEE SPENCE  
Hamden High School  
Sidney Lovett Scholar  
Pierson College  
America Reads Program Coordinator  
Visions of Virtue Mentor, Co-President  
Salt of the Earth Social Justice Group  
Major: African-American Studies/Psychology



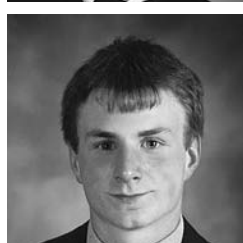
XIEYUE FAN  
Cheshire High School  
Carmen L. Cozza Scholar  
Jonathan Edwards College  
Yale Triathlon Team  
Our Education; New Haven Tutors  
*FIVE* Magazine  
Major: Physics (Intensive) and Philosophy



BRANDON J. TIMMONE  
Hillhouse High School  
Florence & Sherwood Eberth Scholar  
Davenport College  
IM Sports  
Major: Philosophy



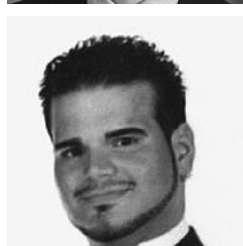
JESSIE E. MACLEOD  
Choate Rosemary Hall  
White Brothers Scholar  
Branford College  
Cross Country and Track  
Works at Furniture Study of Yale Art Gallery  
Major: History



DANIEL B. TURNER-EVANS  
Hopkins School  
Robert E. & Ruth R. Lapidés Scholar  
Calhoun College  
FOOT; Team Lux; IM Secretary  
Club Wrestling; Club Lacrosse  
Undergraduate MATHCOUNTS Outreach  
Researcher in the Reed Lab  
Major: Electrical Engineering



NICOLE POTTER  
Branford High School  
Robert & Joyce Mailhouse Scholar  
Branford College  
Yale Swing Club  
Major: Music



ROBERTO VELEZ  
Fairfield College Preparatory School  
Henry & Janice Brightwell Scholar  
Davenport College  
Despierta Boricua  
UNITY Korean Drum Troupe  
Brother of Sigma Alpha Epsilon Fraternity  
Major: Psychology



STEPHEN SCHWINK  
Sheehan High School  
Edward M. Noyes II Scholar  
Calhoun College  
Calhoun College Webmaster  
*Yale Economic Review*, Webmaster  
Major: Electrical Engineering  
and Computer Science



KRISTEN WILLIAMS  
Hopkins School  
Robert E. & Ruth R. Lapidés Scholar  
Davenport College  
Delta Sigma Theta Sorority  
Community Health Educators  
United Improvement Corporation  
Yale Medical Professions Outreach  
Major: Psychology

## 2007



GILBERT ADDO  
Loomis Chaffee School  
M. Albert Geib Scholar  
Calhoun College  
Yale Club Soccer  
Coaches in the Community, Vice-President  
BME Fahmy Research Group  
BCAY  
Major: Biomedical Engineering & Economics



STEPHEN CHAPIN  
Xavier High School  
Carmen L. Cozza Scholar  
Ezra Stiles College  
Yale Men's Club Soccer, Captain  
*Yale Scientific Magazine*, Staff Writer  
Tau Beta Pi Engineering Honor Society  
New Haven Youth Soccer League, Coach  
Major: Chemical Engineering



TARYN MARIE ANDERSON  
James Hillhouse High School  
James S. Davie Scholar  
Silliman College  
Rhythmic Blue (Co-President)  
Visions of Virtue  
BSAY; BCAY  
Yale West Indian Student Organization  
Major: Psychology



MICHELLE GOSSELEIN  
Joseph Foran High School  
Winthrop A. Smith Scholar  
Ezra Stiles College  
Yale Triathlon Team; Athletes in Action  
Habitat for Humanity; Relay for Life  
Undergraduate Society for Biological Sciences  
Major: Molecular, Cellular and  
Developmental Biology



**LAUREN ALLYSON HACKNEY**  
 Amity High School  
 Silliman College  
 Yale Concert Band, Trumpet  
 Safety Mix Improvisational Comedy Group  
 Yale Student Emergency Medical Services (EMT)  
 Yale Medical Professions Outreach  
 Independent Study in Kenya on HIV/AIDS  
 Major: Anthropology



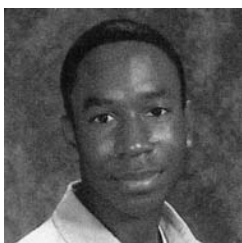
**CAROLINE S. PAGE**  
 Lyman Hall High School  
 Florence & Sherwood Eberth Scholar  
 Timothy Dwight College  
 Yale Glee Club; Yale Chamber Singers  
 America Reads; Nursery School Volunteer  
 Violin Teacher for Local Students  
 U.S. Grant Enrichment Program, Teacher  
 Major: Music and Teacher Preparation



**DANIEL WINSTON HOLEVOET**  
 Wilbur Cross High School  
 A. Bartlett Giamatti Scholar  
*Yale Daily News*, Columnist  
 Campus Mac Hardware Specialist  
 JE Webmaster  
 Major: Computer Science



**ESTHER QUINTANA**  
 Maloney High School  
 Edward M. Noyes II Scholar  
 Branford College  
*Yale Daily News*, Photography Editor  
 Alianza: The Alliance Celebrating  
 Latin Culture  
*Sphere Magazine*, Contributing Photographer  
 Major: Psychology



**CASEY HUGHES**  
 Hamden Hall  
 Willis Hunt Scholar  
 Saybrook College  
 Yale Men's Basketball  
 Athletes in Action  
 Black Church at Yale  
 Major: American Studies



**BRIAN REED**  
 Shelton High School  
 Robert & Joyce Mailhouse Scholar  
 Major: Molecular, Cellular,  
 Developmental Biology



**PUYAO LI**  
 Amity High School  
 Calhoun College  
 Chinese American Students Association  
 Chinese School Lil Sib/ Big Sib Program Director  
 Patient Care Volunteer, Ecuador  
 English and Computer Instructor, Costa Rica  
 IM Ping Pong  
 Major: Molecular Biophysics & Biochemistry



**EDWARD SAGE STOWE**  
 Choate Rosemary Hall  
 White Brothers Scholar  
 Saybrook College  
 Major: Ecology and Evolutionary Biology



**NNEOMA NWACHUKU**  
 Hill Regional Career Magnet High School  
 Sidney Lovett Scholar  
 Morse College  
 Major: Biology



**JOANNA MARIA ZDANYŚ**  
 North Haven High School  
 Henry & Janice Brightwell Scholar  
 Branford College  
*Yale Literary Magazine*, Editor-in-Chief  
 Elizabethan Club; Branford IMs  
 Yale Tour Guide  
 Branford College Master's Aide  
 Major: English



## GRADUATE STUDENTS



**ANNIE BERMAN (NUR) '08**  
 Hopkins School  
 Washington University in St. Louis '03,  
 B.F. A., Photography; Minor, Art History  
 Weitman Photography Prize; Golden Key  
 National Honor Society; Rape crisis counselor  
 Tutoring for low-income dyslexic children  
 Chart data abstractor, Pediatric Asthma Project  
 Goal: Pediatric Nurse Practitioner



**JONATHAN CABIN (MED) '09**  
 Hopkins School  
 University of Pennsylvania '01,  
 B.A., Economics  
 Finance Director, HAVEN Free Clinic  
 Research in Metabolic Bone Disease and  
 Orthopedic Surgery  
 EMT First Responder in Tel Aviv, Israel  
 Goal: Surgeon



**LINDA IVEY BIGLER (DIV) '07**  
 Hamden High School  
 Brown University '74, B.A., French  
 Former Investment Officer  
 Intern for a local congregation  
 Goal: Minister



**KARA DiFRANCESCO (FES) '07**  
 Branford High School  
 University of Virginia '02, B.S. Systems  
 Engineering, Minor Economics and  
 Environmental Studies  
 Goal: International work in sustainable  
 development and access and availability of  
 affordable water supplies



**SASHA LEE DURSO (NUR) '07**  
Jonathan Law High School  
Magna Cum Laude, SCSU '02, B.A.,  
Psychology; B.A., English  
Teaching Assistant, YSN Graduate Entry  
Pre-specialty in Nursing Program  
Goal: Child and Adolescent Psychiatric-  
Mental Health Nurse Practitioner



**PETER FABRICANT (MED) '08**  
Daniel Hand High School  
University of Rochester '04, B.A., Chemistry,  
Magna Cum Laude with Highest Distinction  
Clinical research in clinical orthopedics  
and sports medicine  
Goal: Surgeon



**MAURA C. FISCHER (NUR) '07**  
Amity Regional High School  
University of Massachusetts '02, B.S.  
Psychology, Cum Laude  
Griffin Hospital Mental Health Worker  
Clinical rotation at Masonicare where she  
hopes to make pet therapy a part of her work  
Goal: Gerontological Nurse Practitioner



**MOLLY FLANAGAN (LAW) '07**  
Wilbur Cross High School  
Washington University in St. Louis '03,  
B.A., Social Thought and Analysis; B.A.,  
African and African American Studies  
Interned with Federal Public Defender in  
St. Louis; Juvenile criminal defense in  
Boston at the Youth Advocacy Project  
Goal: A career in public defense



**MELISSA KAYE GLENN (NUR) '07**  
Mark T. Sheehan High School  
University of Colorado '95, B.A.,  
Cultural Anthropology  
Summer YSN volunteer in Esteli, Nicaragua  
Volunteer DESK  
Dancing through Pregnancy instructor;  
Volunteer pre-natal fitness instructor; RN  
Goal: Nurse Midwife



**YOSHIO KANEKO (MED) '09**  
Guilford High School  
Harvard University '02, B.A., Neurobiology,  
Magna Cum Laude; Co-President, Class of '09  
Pediatrics Interest Group; Student Interest  
Group in Neurology; Graduate Affiliate and  
Advisor for Trumbull College  
Goal: Practicing clinician in pediatric  
academic medicine



**JEFFREY MUELLER (LAW) '07**  
West Haven High School  
Yale University '04, B.A., Political Science,  
Summa Cum Laude, Distinction in the Major  
*Yale Law and Policy Review*, senior editor  
YLS legal services  
Interned in the US Attorney's Office, District  
of CT; work in NYC and Hartford law firms  
Goal: Attorney



**ROBIN WALKER (DIV) '07**  
Wilbur Cross High School  
Yale University '84, B.A., English  
YDS Black Seminarists; Student Assistant,  
YDS Visiting Fellows Program  
Summer fellowship in South Africa  
Goal: Doctorate in Media Studies. To research  
the media's impact on adolescent identity,  
faith and culture.



**ROBERT WIYGUL (LAW) '07**  
Hopkins School; Williams College '00, B.A.,  
History and Philosophy, Magna Cum Laude  
University of Cambridge '02, M. Phil.  
*Yale Journal of Law and Humanities*  
Global Constitutionalism Seminar, Assistant  
Work with the President of the European  
Court of Human Rights, Strasbourg, France  
Goal: Law Professor



**LISA WOZNIAC (GRD) '07**  
Hamden High School  
Yale College '00, French & Italian Literature  
Richard J. Franke Interdisciplinary Fellow  
Prince of Liechtenstein Fellow  
Taught Intermediate Italian  
Prospectus on Catherine of Siena  
Member of Dominican Laity  
Goal: University Professor, Writer, Translator



## ELI WHITNEY STUDENTS PROGRAM

Yale's ELI WHITNEY STUDENTS PROGRAM, formerly known as Yale's Degree Special Student Program, is designed for nontraditional students who have not had the opportunity to begin or to complete their formal college education because of previous or continuing family or job responsibilities, but whose work/life experience and community involvements promise to add unusual dimensions to undergraduate life in the classroom. Students attend Yale part-time, are affiliated with but not eligible to live in Residential

Colleges, and are not eligible for financial aid. Eli Whitney Program students meet the same academic requirements as other undergraduates. The SUE M. LEVY MEMORIAL PRIZE, derived from a fund created by family, friends, and classmates of Sue M. Levy, BLS '86, an early leader of Yale's Degree Special Student Program, is awarded to an Eli Whitney Student with financial need who has contributed to the quality of life of the Yale community. The Prize is the only source of financial aid available to these students.

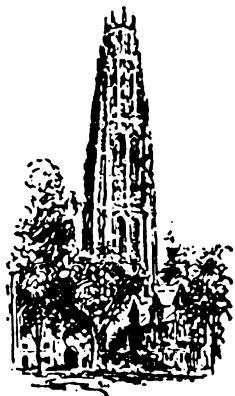


**JESSICA KOVLER '07**  
Major: History of Science/History of Medicine  
Internship at *The New York Times*,  
over 10 bylines  
Student mentor  
Center for Interdisciplinary Research on AIDS  
at Yale Medical School, Research Assistant  
Goal: To become a reporter for  
*The New York Times*



**WENDY VALLEAU '08**  
Major: Classical Civilization/Teacher Prep  
Yale peer tutor in Latin language  
Tutor in ancient Greek, Southern CT  
Language and Cultural Experience Program  
Mother of six children  
Home school teacher for 19 years  
Goal: As a high school teacher, to make a  
difference in the lives of my students.





# THE YALE CLUB OF NEW HAVEN

## SPECIAL CONTRIBUTORS 2005 - 2006

### *Immediate Past President*

Melanie A. Ginter '78, '81 M.S.

### *President*

Bruce W. Sielaff '59 M.A.R.C.H.

### *Vice-President*

Severio D. Fodero  
Jennifer McTiernan '99

### *Secretary*

### *Assistant Secretary*

Barry P. Luke '80

### *Secretary*

### *Graduate & Professional Schools*

William M. Holliday '45W, '50 P.H.D.

### *Assistant Secretary*

### *Graduate & Professional Schools*

David L. Reynolds '63, '66 L.L.B.

### *Treasurer*

Timothy Bertaccini '77

### *Assistant Treasurer*

Carl W. Lindskog '58

### *Directors until 2007*

Makana Ellis '05  
William F. Moore '63, '66 M.A.R.C.H.  
Elaine Piraino-Holevoet '75  
Mary Ellen Savage '92 M.D.  
Michael A. Schaffer '72

### *Directors until 2008*

Earl P. Carlin '45, '51 A.R.C.H.  
Terry M. Holcombe '64, '82 M.A.A.H.  
Tahia Reynaga '98  
Theresa Silla '02  
Alexis Surovov '02  
Robert B. Wheeler '56, '61 M.A.T.

### *Directors until 2009*

Greydon C. Freeman '62 B.E.  
Stefanie C. Nicholas '97  
Olaf Schneider '01

### *Honorary Director*

Helen M. Davie

### NEW LIFE MEMBERS

Frank M. Grazioso, Esq.  
Bruce W. Sielaff  
Prof. Herman D. J. Spiegel

### LIFE MEMBERS

James R. Anderson, Jr.  
Mary Arnstein  
Prof. Richard Clark Baker  
Elizabeth Morse Baptie  
James Berman  
Harold D. Bornstein, Jr. M.D.  
Henry P. Brightwell, Jr.\*  
Hon. Robert P. Burns  
Hon. Ellen B. Burns  
Thomas G. Campbell  
Louis A. Cappiello  
Mr. & Mrs. David G. Carter  
Helen C. Cavallaro  
Frank C. Chapman  
Elizabeth M. Clark  
Robert O. Corley  
Carmen Cozza  
Lycurgus M. Davey, M.D.  
Hon. Anthony V. DeMayo  
Richard S. Dowdy, Jr. Esq.  
John F. Embersits  
Frederick W. Farnsworth  
Evelyn A. Gahbauer  
Gordon T. Geballe  
Christopher Getman  
Prof. Creighton E. Gilbert  
Melanie A. Ginter  
Eugene H. Gordon, Esq.  
Arthur E. Hall  
Richard Hegel  
Susana Wilder Heinz  
Prof. Arvid Herzenberg  
George W. Heston  
Terry M. Holcombe  
Stuart D. Holland  
Prof. Gueh-Djen Edith Hsiung  
Gerald M. Kagan  
Naomi M. Kantrow  
Dr. John D. Kelly  
Frank Kenna  
Mary Ellen Khan  
Elizabeth B. Kubler  
Ruth E. Lapidès  
Mrs. Roberta Lawrence

\* deceased

Carleton F. Loucks  
Carl W. Lindskog  
Ken Mackenzie  
Robert Mailhouse  
John Mc Crillis  
Dr. Roslyn Milstein Meyer  
Marguerite Nelligan  
Dan A. Oren, M.D.  
Alan W. Organschi  
James R. Owens, Jr.  
Vincent Pepe, M.D.  
Nicholas V. Perricone, M.D.  
Zachary W. Pitluk  
Prof. Charles Allan Porter  
Helen E. Prouty  
John S. Robinson  
Lois G. Salamon  
Richard B. Schreiber  
James H. Shattuck  
DeForest W. Smith  
Shepard B. Stone  
Prof. Hugh Stimson  
Macneil Sturgess  
Martin L. Sumner, M.D.  
Josephine M. Sutula  
Louis F. Tagliatela, Sr.  
George B. Uihlein  
Dr. Morton Joel Weyler  
Elizabeth C. Yen  
Prof. Edward A. Zelinsky  
Doris Zelinsky

### GIAMATTI CLUB (*\$1000 and Over*)

Robert Baptie  
Dr. Philip M. Oravetz  
Phyllis Z. Seton  
Winthrop Smith  
Mr. & Mrs. Jeffrey White

### PRESIDENTS CLUB (*\$500-\$999*)

John & Dorothy Allen  
William Curran  
Melanie A. Ginter  
Richard Hegel  
Carleton F. Loucks  
Barry P. Luke  
James C. Poloshain  
Daniel Starr  
Prof. Eugene M. Waith  
Elizabeth C. Yen

### YALE NEW HAVEN CLUB

(*\$250-\$499*)

Tim Bertaccini  
Dr. & Mrs. Harold D.  
Bornstein, Jr.  
William F. Dow, III  
Glenn H. Gregg  
John S. Lapidès  
Prof. Richard Larson  
Robert Farnsworth Morse  
Lesley Mills  
David L. Reynolds  
Joseph R. Roach &  
Janice Carlisle  
Rev. Arthur B. Robertshaw III  
Prof. Jeffrey L. Sammons

### ELM CITY CLUB (*\$100-\$249*)

George W. Adams, III  
Mrs. Arnold J. Alderman  
Myles H. Alderman  
Peter S. Aronson, M.D.  
Celeste Bagley  
William L. Barbieri  
Beatrice Sturgis Bartlett  
Susan Baserga  
David L. Belt, Esq.  
Sanjeer Bhalla  
Ericsson B. Broadbent  
John M. Brown  
Paula G. Burkhard  
Edward H. Cantor  
Robert C. Child, III  
Prof. Elias Clark  
Joel Cogen, Esq.  
Gregory Coleman  
Dr. Lycurgus M. Davey  
Susan DeSilver  
Peter C. Dorsey  
Mortimer L. Downey  
Robert H. Dunlop, III  
R. Kemerer Edwards  
Carl G. Ek  
Hon. John C. Flanagan  
Severio D. Fodero  
Greydon C. Freeman  
Christopher Getman  
David H. Gibson, M.D.  
Edward C. Goldstone  
Philip W. Grande, Jr.

Mr. & Mrs. Ira Grudberg  
George W. Heston  
W. Anthony Hogan, Jr.  
Terry M. Holcombe  
Dr. William M. Holliday  
Hilary Haig Holowink  
Han-Ya Annie Hsu  
Karl L. Insogna, M.D.  
Frank Kenna  
James Killelea  
Harvey L. Koizim  
Ruth G. Koizim  
Robert Lester  
Herbert D. Lewis, M.D.  
John A. Logan, Jr.  
Michael Lombardo  
Richard Massey  
Nancy K. Mendel  
Lloyd K. Milter, M.D.  
William F. Moore  
Marta E. Moret  
George B. Olson  
Charles A. Pillsbury  
Elaine Piraino-Holevoet  
Wesley H. Poling  
Kyle D. Pruett, M.D.  
Dr. Stanley F. Reiter  
Carol H. Ripple  
Lucille B. & Samuel Ritvo  
Paul M. Russ  
Humbert Vincent Sacco, Jr.  
Katharine B. Sacks  
Prof. Peter Salovey  
Lawton G. Sargent, Jr.  
Mary Ellen Savage, M.D.  
Robert B. Scullin  
Charles W. Sizemore  
DeForest W. Smith  
Marjorie Smith  
Stephanie S. Spangler, M.D.  
Cameron Speth  
Gay Steinbach  
Hugh M. Stimson  
Shepard B. Stone  
Martin L. Sumner, M.D.  
Edward P. Tantorski  
John M. Thomas, M.D.  
Susan A. Weihl  
Mary S. Winder  
John A. Wilkinson  
Mr. & Mrs. Robert B. Wheeler  
Jonas Zdany